



SIMPLE LIFE



SIMPLE LIFE



Raffia Mead, Milard Grange, Dunstable, LU5

£1,650 Per Month

Welcome to Milard Grange, a stunning development offering a mix of 2, 3 & 4 bedroom homes.

The welcoming central hallway of the Grantham sits in between the living room and the kitchen. A house designed with you in mind, the spacious lounge provides the perfect area to relax, whilst the dining/kitchen area provides a great place to spend time and entertain with its French windows opening on to the garden. A WC is conveniently situated off the hallway, completing the downstairs.

Upstairs, the house has a large master bedroom with fitted, mirrored wardrobes, and a further two bedrooms. A stylish family bathroom with a separate bath and shower provides the best of both worlds, whilst a storeroom on the landing provides a space to store bits and pieces.

Leagrave train station is less than 5 miles away providing quick access to Bedford, Brighton, Luton, St Albans and Gatwick, whereas the M1 and the A5-M1 Link are close by to take you beyond to Milton Keynes and London.

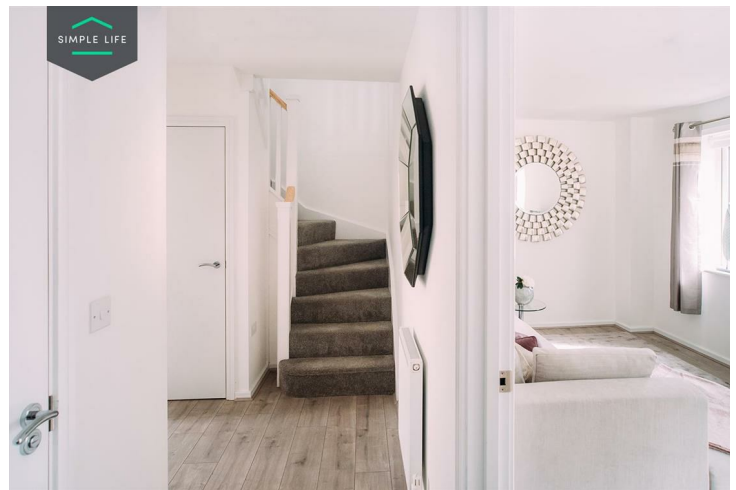
Both centres of Houghton Regis and Dunstable are within easy reach of the site offering many local shops and supermarkets as well as the nearby White Lion Retail Park which includes a Next and an M&S Simply food among many other high street names.

For those of you looking to get out into nature you'll find Houghton Hall Park ideal for dog walkers, jogging and family outings. The Barton Hills National Nature Reserve is close to the site to the north east, with ZSL Whipsnade Zoo a 15 minute drive away. And with Luton and London nearby, the opportunities for nightlife are boundless!

To access the site use the postcode LU5 6JQ via Thorn Road.

Deposit £1900
Holding Deposit £380
Unfurnished
Council Tax C
Available 22nd January 2026





Key Features

- Car Parking Space
- Dishwasher
- Washing/drying machine
- Carpets up the stairs and in the bedrooms
- Blinds in the bedrooms
- Security Alarm
- Fridge-freezer
- Modern kitchen worktops and units
- Private back garden

Location

